

Maintaining a safe transportation system is essential to sustaining and enhancing the quality of life for Berks County residents. Deaths and injuries resulting from traffic crashes are a public health concern and impact local communities with medical costs, lost wages, insurance costs, taxes, police, fire, and emergency medical services, legal and court costs, and property damage. In addition, traffic crashes can create travel time delays, congestion, and impact air quality.

As part of its safety program, PennDOT collects traffic crash data for the entire state and reports data at the state, county, and municipal level. For the purposes of this plan, county crash data for Berks County was analyzed using the Pennsylvania Crash Information Tool (PCIT). In addition, the 2022 Pennsylvania Strategic Highway Safety Plan was used in the development of this chapter and the plan's safety performance measures. Motor vehicle crashes generally involve multiple contributing factors that may be related to drivers, the roadway, or the vehicle(s) involved, thus making transportation safety a multidisciplinary concern.

Analyzing crash trends allows PennDOT and RATS to focus on setting goals to improve upon those trends by programming safety improvements to the road system itself or encouraging greater emphasis on education and enforcement. The Reading Area Transportation Study's Traffic Safety Report ([RATS-Safety-Report-2025-FINAL.pdf](#)) is updated annually and analyzes additional crash data, identifies potential countermeasures to address safety, and reviews the MPO's safety performance measures and targets. The RATS Traffic Safety Report is used to help develop the recommendations identified in Chapter 4 of this plan.

Berks County has a significant number of crashes – ranking sixth in the state in the number of overall crashes and fifth in the number of fatal crashes between 2020 and 2024. These are consistent with Berks County's overall ranking with respect to total population (9th in 2024) total linear miles of roadway (8th in 2024), and total Vehicle Miles Traveled (VMT) (7th in 2024).

TOP 10 COUNTIES IN PA BY CRASHES 2020-2024		TOP 10 COUNTIES IN PA BY FATAL CRASHES 2020-2024	
Allegheny	53,928	Philadelphia	677
Philadelphia	45,578	Allegheny	354
Montgomery	38,407	Lancaster	262
Lancaster	27,180	Bucks	242
Bucks	27,036	Berks	216
Berks	23,740	Montgomery	209
Delaware	23,359	York	173
Lehigh	23,316	Luzerne	158
York	22,124	Westmoreland	155
Chester	20,454	Chester	145

Source: PennDOT Pennsylvania Crash Information Tool, 2020-2024

Although significant progress has been made, lives are still being lost on Berks County roads. The chart below shows that fatalities have increased 30.6% from 2020 to 2024. Injury and property damage only crashes increased as well and remain the prominent type of crash throughout the years shown.

<b>BERKS COUNTY CRASHES BY SEVERITY BETWEEN 2020 AND 2024</b>								
	2020	2021	2022	2023	2024	Total	# Change	% Change
<b>Fatal</b>	36	40	46	47	47	216	11	30.6%
<b>Injury</b>	1,762	1,959	1,973	1,965	1,947	9,606	185	10.5%
<b>Property Damage Only</b>	2,371	2,691	2,768	2,542	2,587	12,959	216	9.1%
<b>Total</b>	4,169	4,690	4,787	4,554	4,581	22,781	412	9.9%

Source: PennDOT Pennsylvania Crash Information Tool, 2020-2024

The toll from those crashes in Berks County is significant. Approximately 51,000 people and nearly 43,000 vehicles have been involved in crashes since 2020.

<b>PERSONS AND VEHICLES INVOLVED IN BERKS COUNTY CRASHES BETWEEN 2020 AND 2024</b>								
	2020	2021	2022	2023	2024	Total	# Change	% Change
<b>Persons</b>	9,427	10,685	10,600	10,089	10,361	51,162	934	9.9%
<b>Vehicles</b>	7,843	8,947	8,916	8,500	8,509	42,715	666	8.5%

Source: PennDOT Pennsylvania Crash Information Tool, 2020-2024

**Crash Corridors**

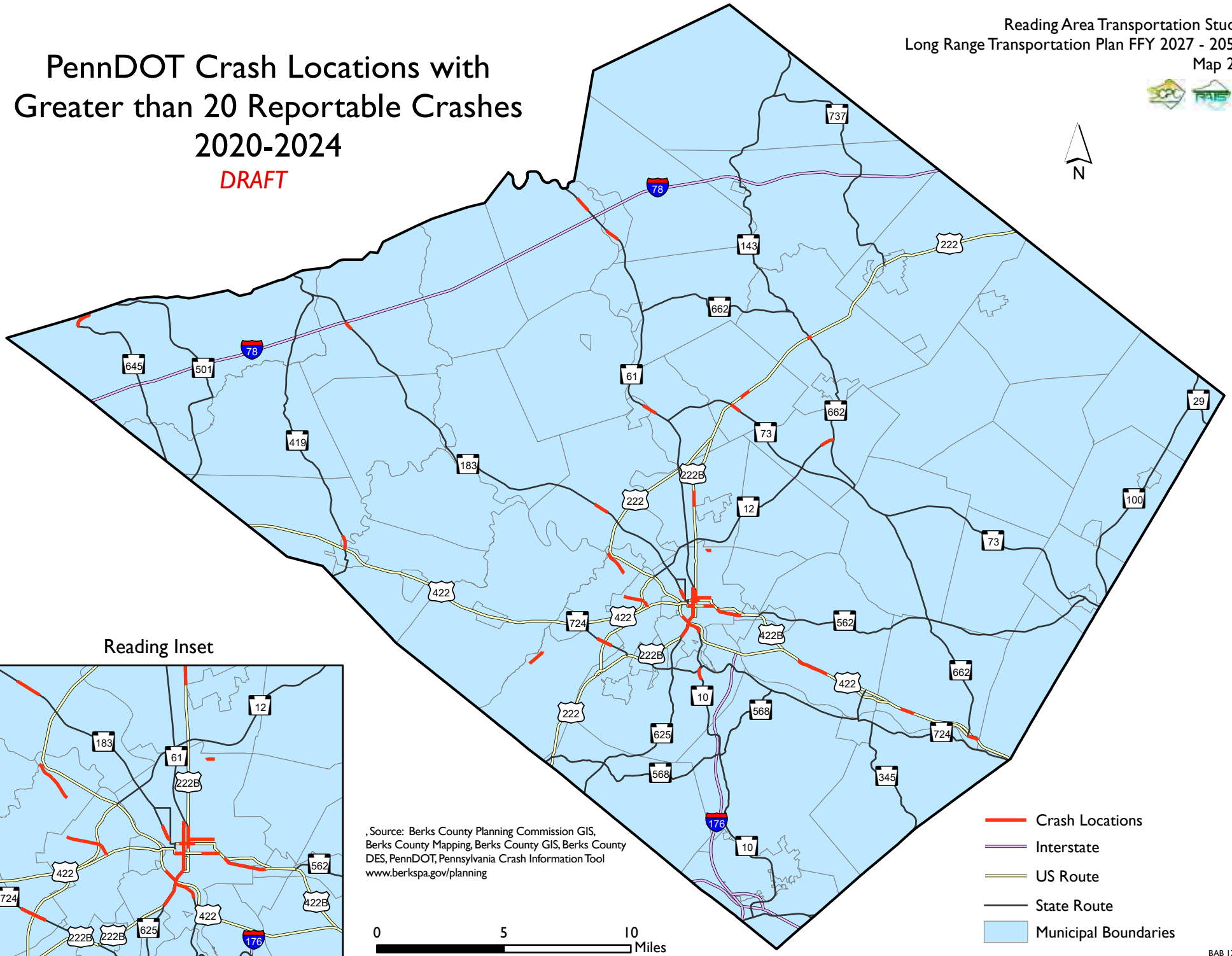
PennDOT has a variety of crash information available through their website. PennDOT’s Pennsylvania Crash Information Tool (PCIT) provides users the ability to search specific criteria related to crashes, persons, and vehicles. Date ranges as well as locations can also be specified. A variety of options are available for the selected data to be displayed including either by point map or heat map, table, or report.

Using PCIT data, the map on the following page identifies roadway segments where more than 20 reportable crashes occurred between 2020 and 2024. Major roadways with higher traffic volumes are the main locations for the larger number of reportable crash incidents in Berks County.

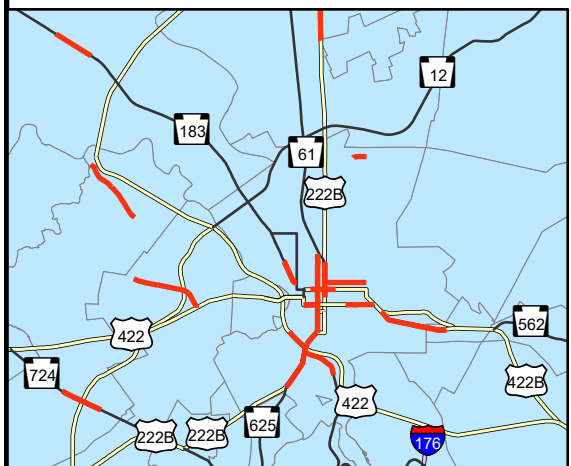


# PennDOT Crash Locations with Greater than 20 Reportable Crashes 2020-2024

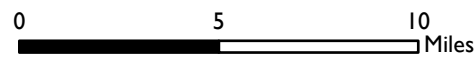
**DRAFT**



Reading Inset



, Source: Berks County Planning Commission GIS,  
Berks County Mapping, Berks County GIS, Berks County  
DES, PennDOT, Pennsylvania Crash Information Tool  
[www.berkspa.gov/planning](http://www.berkspa.gov/planning)



- Crash Locations
- Interstate
- US Route
- State Route
- Municipal Boundaries

## A Closer Look at Crash Severity

Although fatal crashes increased from 2020 to 2024, over the 20-year period from 2005 to 2024, fatal crashes decreased nearly 30% and suspected serious injury crashes decreased approximately 8%. While fatal crashes and suspected serious injury crashes showed decreases over this 20-year period, the population, total vehicle registrations, and daily VMT for Berks County increased.

### FATAL AND SERIOUS INJURY CRASHES COMPARISON 2005 TO 2024

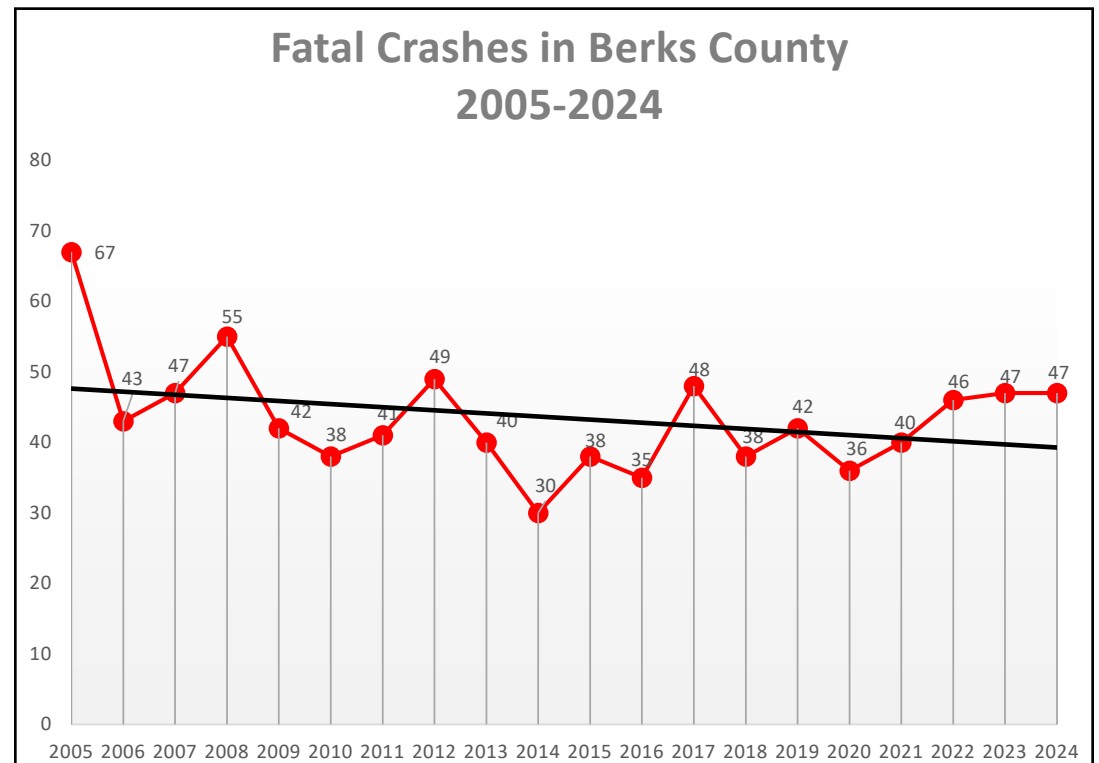
	2005	2024	# Change	% Change
Fatal Crashes	67	47	-20	-29.85%
Suspected Serious Injury Crashes	181	166	-15	-8.29%
Population	395,933	439,117	43,184	10.91%
Vehicle Registrations	367,794	407,561	39,767	10.81%
VMT	8,879,040	9,028,867	149,827	1.69%

Source: PennDOT Pennsylvania Crash Information Tool, 2005-2024; Population (Persons), U.S. Census Bureau; PennDOT Annual Report of Registrations 2005-2024; PennDOT Highway Statistics 2005-2024



## Fatal Crashes

Fatal crashes on Berks County roads are attributed to a number of factors. Most fatal crashes are the result of driver behavior, namely aggressive driving. The old description of aggressive driving notes at least one driver's action was considered aggressive while the new description identifies at least 2 actions of a driver as being aggressive. Both time of day and poor weather conditions do not appear to be an important factor. Less than half of all fatal crashes occurred at night and fewer occurred on wet, icy, or snowy roads.



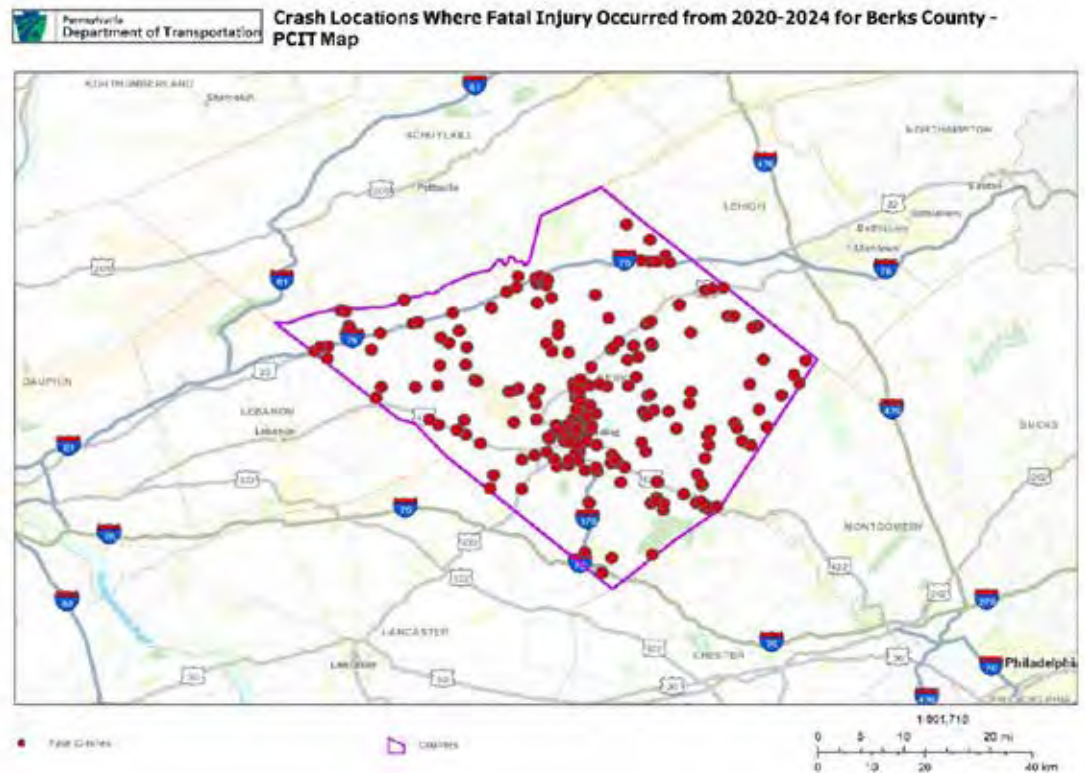
Source: PennDOT Pennsylvania Crash Information Tool, 2005-2024

Driver error is identified as the predominant reason fatal crashes occurred in Berks County between 2020 and 2024. The main prime factors for this time period relating to driver error include driving too fast for road conditions (total 28), speeding (total 24), and driving on the wrong side of the roadway (total 19). Many unknown factors (total 54) are also identified for the 2020-2024 period.

FATAL CRASHES IN BERKS COUNTY BY PRIME FACTOR TYPE BETWEEN 2020 AND 2024								
	2020	2021	2022	2023	2024	Total	# Change	% Change
Driver	33	35	42	38	40	188	7	21.2%
Environmental/Roadway	1	2	0	3	3	9	2	200.0%
Pedestrian	1	3	4	4	0	12	-1	-100.0%
Vehicle	1	0	0	1	0	2	-1	-100.0%
Unknown	0	0	0	1	4	5	4	400.0%
<b>Total</b>	<b>36</b>	<b>40</b>	<b>46</b>	<b>47</b>	<b>47</b>	<b>216</b>	<b>11</b>	<b>30.6%</b>

Source: PennDOT Pennsylvania Crash Information Tool, 2020-2024

Fatal crashes between 2020 and 2024 predominantly occurred in and around the City of Reading, as well as along major corridors throughout Berks County.



The majority of fatal crashes involved hitting fixed objects and angle crashes between 2020 and 2024.

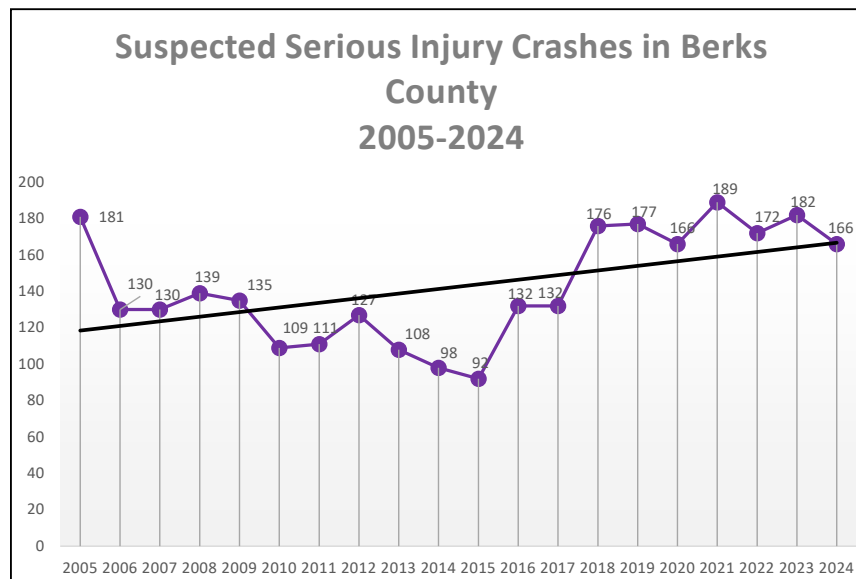
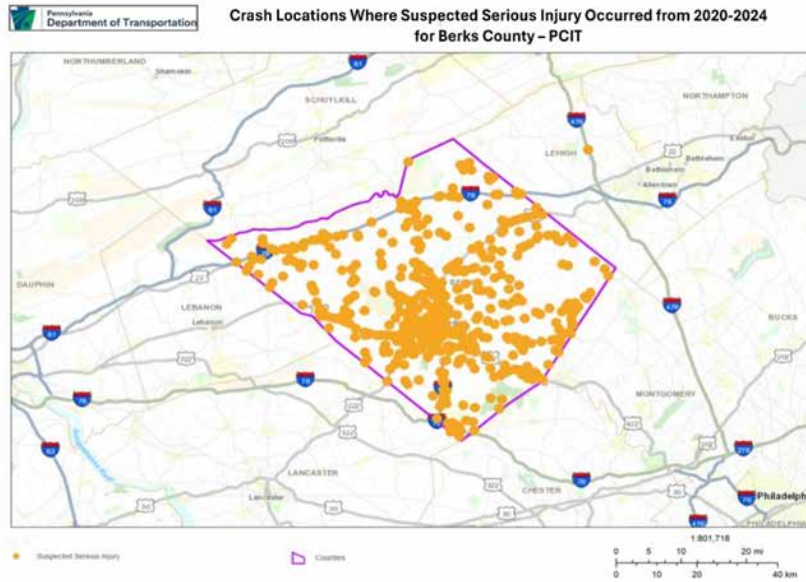
<b>FATAL CRASHES BY COLLISION TYPE IN BERKS COUNTY BETWEEN 2020 AND 2024</b>								
	2020	2021	2022	2023	2024	Total	# Change	% Change
Angle	10	11	14	6	15	56	5	50.0%
Head-on	1	3	8	11	3	26	2	200.0%
Hit fixed object	13	10	10	16	17	66	4	30.8%
Hit Non-motorist	5	6	9	6	6	32	1	20.0%
Non collision	3	3	1	0	0	7	-3	-100.0%
Other or unknown	0	0	0	2	1	3	1	100.0%
Rear-end	3	7	2	2	3	17	0	0.0%
Rear-to-rear (Backing)	0	0	0	0	0	0	0	0.0%
Sideswipe (Opposite Direction)	1	0	0	0	1	2	0	0.0%
Sideswipe (Same Direction)	0	0	2	4	1	7	1	100.0%
<b>Total</b>	<b>36</b>	<b>40</b>	<b>46</b>	<b>47</b>	<b>47</b>	<b>216</b>	<b>11</b>	<b>30.6%</b>



*Safety Improvements are programmed for the intersection of PA12 with Elizabeth Avenue and Hill View Road in Alsace Township with construction anticipated to begin in 2027.*

## Injury Crashes

According to the United States Centers for Disease Control (CDC), motor vehicle crashes are a leading cause of death, resulting in 120 deaths per day, across the United States. In Pennsylvania, more than 3 persons were fatally injured each day, resulting in over 1,100 fatalities in 2024. The total fatal injury crashes in Pennsylvania in 2024 caused over \$15 billion in comprehensive loss, including medical bills and work loss costs.



Source: PennDOT Pennsylvania Crash Information Tool, 2005-2024

## Restraint Use

One of the most important actions a motorist can take to save lives and prevent serious injuries while traveling is to use safety belts. While overall seatbelt use has remained near the state average, the number of crashes that involved unbelted occupants in annual crashes in Berks County decreased significantly since 2020 dropping to 7.4% in 2024 from 10.3% in 2020 representing a 21.7% decrease in unbelted occupants involved in crashes.

PERCENT SEATBELT USE IN CRASHES		
Year	Berks	Pennsylvania
2015	80	80
2016	79	80
2017	80	80
2018	79	80
2019	80	81
2020	79	79
2021	79	80
2022	78	81
2023	77	81
2024	78	82

Source: 2019 and 2024 PennDOT Pennsylvania Crash Facts and Statistics Booklets



## CRASHES INVOLVING UNBELTED OCCUPANTS BETWEEN 2020 AND 2024

	2020	2021	2022	2023	2024	Total	# Change	% Change
<b>Crashes</b>	451	448	430	372	353	2,054	-98	-21.7%
<b>Percentage of Annual Total Crashes</b>	10.3%	9.1%	8.6%	7.9%	7.4%	8.7%	-2.9%	-28.1%

Source: PennDOT Pennsylvania Crash Information Tool, 2020-2024

Suspected serious injury crashes involving unbelted occupants showed the largest decrease representing a 58% reduction from 2020 to 2024. Out of the total number of fatal crashes for Berks County from 2020 to 2024, the percentage of fatal crashes that involved unbelted occupants was nearly 30%.

## CRASH SEVERITY INVOLVING UNBELTED OCCUPANTS IN BERKS COUNTY BETWEEN 2020 AND 2024

	2020	2021	2022	2023	2024	Total	# Change	% Change	Total Severity Crashes	% of Total Severity Crashes
<b>Fatal</b>	11	14	13	14	11	63	0	0.0%	216	29.2%
<b>Injury</b>	263	252	239	226	206	1186	-57	-21.7%	9,606	12.3%
<b>Possible Injury</b>	50	47	25	40	38	200	-12	-24.0%	1,881	10.6%
<b>Suspected Minor Injury</b>	135	146	130	127	118	656	-17	-12.6%	5,385	12.2%
<b>Suspected Serious Injury</b>	50	43	38	34	21	186	-29	-58.0%	875	21.3%
<b>Property Damage Only</b>	165	179	175	126	129	774	-36	-21.8%	12,959	6.0%
<b>Total</b>	674	681	620	567	523	3065	-151	-22.4%		

Source: PennDOT Pennsylvania Crash Information Tool, 2020-2024

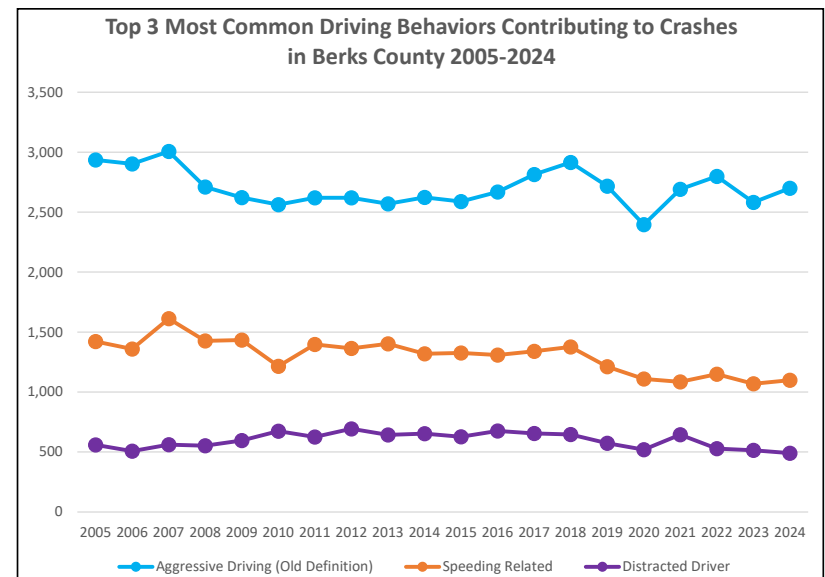
## Driving Behaviors

Driving behavior plays a major role in crash trends in Berks County. In many instances, crashes involving driving behaviors could be avoidable. Aggressive driving, speeding, and distracted driving continue to be the largest contributors to crashes in Berks County. Generally, vehicle manufacturers now include hands-free technology for cell phones as part of their standard vehicle package. Additional technology is also becoming standard such as navigation and weather applications. In many cases, the increase in available technology has contributed to distracted driving by providing additional visual distractions and feature adjustments while driving.

Of these three driving behaviors, aggressive driving remains the predominant contributor to crashes and increased almost 13% from 2020 to 2024 while speeding related and distracted driving decreased slightly.

BERKS COUNTY CRASHES BY DRIVING BEHAVIOR 2020-2024								
	2020	2021	2022	2023	2024	Total	# Change	% Change
Aggressive Driving	245	292	308	317	412	1,574	167	68.2%
Aggressive Driving (Old Definition)	2,396	2,691	2,798	2,581	2,700	13,166	304	12.7%
Speeding Related	1,110	1,086	1,149	1,069	1,100	5,514	-10	-0.9%
Distracted Driving	520	644	529	515	491	2,699	-29	-5.6%
Unbelted	451	448	430	372	353	2,054	-98	-21.7%
Curve Driver Error	124	156	141	158	196	775	72	58.1%
Tailgating	162	195	186	169	226	938	64	39.5%
Running Red Lights	194	203	211	167	186	961	-8	-4.1%
Fatigue or Asleep	117	140	124	154	113	648	-4	-3.4%
Running Stop Sign	125	152	133	138	117	665	-8	-6.4%
Impaired Driver	356	445	402	370	336	1,909	-20	-5.6%
Cell Phone	43	46	82	86	99	356	56	130.2%
<b>Total</b>	<b>5,843</b>	<b>6,498</b>	<b>6,493</b>	<b>6,096</b>	<b>6,329</b>	<b>31,259</b>	<b>486</b>	<b>8.3%</b>

Source: PennDOT Pennsylvania Crash Information Tool, 2020-2024



## Road Conditions

We drive in sometimes challenging road conditions. When road conditions deteriorate, we tend to stay off the roads or drive more carefully. When road conditions are favorable, there are generally more vehicles on the road and drivers tend to drive faster. This means that more crashes occur during dry road conditions during daylight hours with clear weather.

<b>BERKS COUNTY CRASHES BY ROAD CONDITION 2020-2024</b>								
	2020	2021	2022	2023	2024	Total	# Change	% Change
<b>Dry</b>	3,222	3,964	3,783	3,753	3,666	18,388	444	13.78%
<b>Ice/Frost</b>	73	63	110	28	48	322	-25	-34.25%
<b>Mud, Dirt, Gravel</b>	6	12	8	1	9	36	3	50.00%
<b>Oil</b>	1	1	0	2	1	5	0	0.00%
<b>Other</b>	0	4	6	4	2	16	2	200.00%
<b>Sand</b>	0	0	0	1	0	1	0	0.00%
<b>Slush</b>	21	36	61	8	38	164	17	80.95%
<b>Snow</b>	77	111	140	39	173	540	96	124.68%
<b>Unknown</b>	13	12	12	10	8	55	-5	-38.46%
<b>Water (Standing or Moving)</b>	22	15	18	19	8	82	-14	-63.64%
<b>Wet</b>	925	701	851	859	794	4,130	-131	-14.16%
<b>Total</b>	4,360	4,919	4,989	4,724	4,747	23,739	387	8.88%

Source: PennDOT Pennsylvania Crash Information Tool, 2020-2024

Encounters with wildlife on our roads and bridges can present safety issues for the motoring public. Wildlife movements can be sudden and unpredictable, which causes motorists to react quickly. In some instances, crashes with wildlife are unavoidable. Additionally, roadways and bridges can separate species habitats which creates an increase in the species presence on a roadway or bridge. Sometimes, those species crossing roadways and bridges are species that may be unique to a location or are protected due to low population counts. To address crashes involving wildlife, PennDOT evaluates all projects for potential wildlife crossings and has incorporated this into their Design Manual – 2.

Given the state’s large deer population, crashes involving deer are growing. According to PennDOT and the Pennsylvania Game Commission, deer-vehicle crashes rise dramatically in October and November, mostly because of the “rut”, or deer-mating season, which peaks late October to mid-November.

<b>DEER RELATED CRASHES BY MONTH IN BERKS COUNTY BETWEEN 2020 AND 2024</b>								
	2020	2021	2022	2023	2024	Total	# Change	% Change
January	12	16	7	16	16	67	4	33.3%
February	11	2	15	11	7	46	-4	-36.4%
March	7	10	6	4	9	36	2	28.6%
April	9	12	9	5	4	39	-5	-55.6%
May	18	11	16	14	18	77	0	0.0%
June	9	14	12	16	21	72	12	133.3%
July	7	10	7	6	17	47	10	142.9%
August	7	5	10	15	4	41	-3	-42.9%
September	9	14	16	13	16	68	7	77.8%
October	26	40	31	48	61	206	35	134.6%
November	37	34	37	54	43	205	6	16.2%
December	11	15	19	29	14	88	3	27.3%
<b>Total</b>	<b>163</b>	<b>183</b>	<b>185</b>	<b>231</b>	<b>230</b>	<b>992</b>	<b>67</b>	<b>41.1%</b>

Source: PennDOT Pennsylvania Crash Information Tool, 2020-2024

### Intersections

Crashes at intersections showed a relatively steady increase from 2020 to 2024 in Berks County with stop controlled intersections increasing 27.4%. Due to the turning movements occurring at intersections, the predominant collision type is generally an angle crash.

<b>BERKS COUNTY CRASHES BY INTERSECTION CONTROL TYPE 2020-2024</b>								
	2020	2021	2022	2023	2024	Total	# Change	% Change
Signalized Intersection	660	769	780	713	738	3,660	78	11.8%
Stop Controlled	543	704	665	689	692	3,293	149	27.4%
Unsignalized Intersection	1,116	1,271	1,331	1,282	1,259	6,259	143	12.8%
<b>Total</b>	<b>2,319</b>	<b>2,744</b>	<b>2,776</b>	<b>2,684</b>	<b>2,689</b>	<b>13,212</b>	<b>370</b>	<b>16.0%</b>

Source: PennDOT, Pennsylvania Crash Information Tool, 2020-2024



**Special Zones**

Crashes in work zones are a major concern as the majority of them could be avoided if drivers abide by signage and follow the lower speeds implemented in active work zones. In an effort to combat crashes in active work zones, Pennsylvania implemented the Automated Work Zone Speed Enforcement (AWZSE) program in March 2020. Vehicle mounted systems are used to record drivers that exceed posted work zone speed limits by 11 miles per hour or more. The pilot program aimed at reducing driver speeds in work zones and improving driver behaviors in work zones to save worker and traveler lives, promote work zone safety, and complement existing enforcement by the Pennsylvania State Police. In late 2023, Governor Josh Shapiro signed House Bill 1283, establishing Act 38 of 2023 which made the newly named Work Zone Speed Safety Camera (WZSSC) program a permanent tool to improve work zone safety on appropriate PennDOT and PA Turnpike roadways. The program became effective on February 15, 2024. As part of the program, PennDOT develops an annual report ([2025-WZSSC-Annual-Report.pdf](#)) that analyzes and documents the success of the program.

While crashes in school zones remains low, there continues to be a high number of crashes in work zones especially in 2021 which peaked at 151 crashes. Additional programs and continued driver education on work zone safety have helped reduce the number of crashes in these zones representing a 23.3% decrease in Berks County from 2020 to 2024.

<b>SPECIAL ZONE CRASHES IN BERKS COUNTY BETWEEN 2020 AND 2024</b>								
	2020	2021	2022	2023	2024	Total	# Change	% Change
<b>Work Zones</b>	86	151	99	81	66	483	-20	-23.3%
<b>School Zones</b>	21	15	23	17	18	94	-3	-14.3%

Source: PennDOT Pennsylvania Crash Information Tool, 2020-2024

**Special Types of Vehicles**

Given the increase in online purchasing, warehousing and that the County Interstate system is a major freight corridor, it is not surprising to see more heavy trucks on the road and as a result, involved in more crashes.

<b>CRASHES BY SELECT VEHICLE TYPE IN BERKS COUNTY BETWEEN 2020 AND 2024</b>								
	2020	2021	2022	2023	2024	Total	# Change	% Change
<b>Heavy Truck Related</b>	276	357	392	301	303	1,629	27	9.8%
<b>Commercial Vehicle</b>	281	377	431	367	366	1,822	85	30.2%
<b>School Buses</b>	3	4	6	10	2	25	-1	-33.3%
<b>Horse and Buggy</b>	0	0	1	2	1	4	1	100.0%
<b>Trains</b>	0	1	0	3	2	6	2	200.0%

Source: PennDOT Pennsylvania Crash Information Tool, 2020-2024

## At-Risk Drivers

At-risk drivers include older drivers (65+) and young drivers (16-20). Older drivers are in crashes at a higher rate due to visual, cognitive and physical skill deterioration. Younger drivers are less experienced and less mature which contributes to the higher crash rate among that age group. A common theme throughout this plan is the rise of elderly drivers on the road. The number of elderly drivers will continue to increase, eventually outnumbering the younger drivers, as the baby boomer generation continues to age. Driver licensing requirements have aided in reducing crashes among age 16 population. However, this age group and the age 17 group shows the greatest increases among these at-risk populations by approximately 30% and 34% respectively from 2020 to 2024. The 50-64 age group continues to have the highest number of total crashes annually across this 5-year time period.

BERKS COUNTY CRASHES BY YOUNG AND MATURE DRIVERS 2020-2024								
	2020	2021	2022	2023	2024	Total	# Change	% Change
Age 16	66	64	70	84	86	370	20	30.3%
Age 17	159	190	218	198	213	978	54	34.0%
Age 18	234	263	276	248	258	1,279	24	10.3%
Age 19	214	249	255	225	254	1,197	40	18.7%
Age 20	239	258	251	246	240	1,234	1	0.4%
Age 50-64	1,127	1,302	1,300	1,177	1,255	6,161	128	11.4%
Age 65-74	441	487	534	486	511	2,459	70	15.9%
Age 75+	259	300	318	323	313	1,513	54	20.8%
<b>Total</b>	<b>2,739</b>	<b>3,113</b>	<b>3,222</b>	<b>2,987</b>	<b>3,130</b>	<b>15,191</b>	<b>391</b>	<b>14.3%</b>

Source: PennDOT Pennsylvania Crash Information Tool, 2020-2024



## Vulnerable Road Users

Vulnerable road users (VRU) are those individuals that are using the road without a vehicle surrounding them for protection. Most commonly, these are pedestrians, bicyclists, and other persons using non-motorized means of transportation. For comparison purposes of this part of the plan, they are included in the following table.

Fatal crashes involving bicyclists decreased approximately 67% from 2020 to 2024. Additionally, fatal crashes involving pedestrians remained steady from 2020 to 2024 in Berks County with a single peak occurring in 2022.

CRASHES INVOLVING VRUS IN BERKS COUNTY BETWEEN 2020 AND 2024								
Pedestrians	2020	2021	2022	2023	2024	Total	# Change	% Change
<b>Crashes</b>	122	124	134	124	153	657	31	25.4%
<b>Suspected Serious Injury</b>	15	22	20	34	25	116	10	66.7%
<b>Fatal Crashes</b>	5	5	8	5	5	28	0	0.0%
Bicycles	2020	2021	2022	2023	2024	Total	# Change	% Change
<b>Crashes</b>	25	21	22	37	50	155	25	100.0%
<b>Suspected Serious Injury</b>	1	3	3	4	6	17	5	500.0%
<b>Fatal Crashes</b>	3	1	1	1	1	7	-2	-66.7%

Source: PennDOT Pennsylvania Crash Information Tool, 2020-2024

## Motorcycles

While fatality rates for vulnerable road users are low and declining, the chart below shows that motorcycle fatalities had a high occurrence from 2020 to 2024. Pennsylvania's motorcycle helmet law requires any person that operates or rides a motorcycle to wear protective headgear unless they are over 21 years of age **and** has either two years of riding experience or has completed a PennDOT approved motorcycle safety course. Since 2020, motorcyclists involved in crashes have increased helmet use 40%.

CRASHES INVOLVING MOTORCYCLES IN BERKS COUNTY BETWEEN 2020 AND 2024								
Motorcycles	2020	2021	2022	2023	2024	Total	# Change	% Change
Crashes	146	151	164	193	166	819	20	13.7%
Suspected Serious Injury	34	45	41	39	39	198	5	14.7%
Fatal Crashes	7	8	8	15	14	52	7	100.0%

Source: PennDOT Pennsylvania Crash Information Tool, 2020-2024

MOTORCYCLE HELMET USE IN BERKS COUNTY CRASHES BETWEEN 2020 AND 2024								
	2020	2021	2022	2023	2024	Total	# Change	% Change
Helmet Used	55	69	80	83	77	364	22	40.0%
No Helmet Used	68	59	62	68	48	305	-20	-29.4%
Unknown Helmet Use	23	23	22	42	41	151	18	78.3%
Total	146	151	164	193	166	820	20	13.7%

Source: PennDOT, PennDOT Crash Data Downloads, 2020-2024

In addition, motorcyclists involved in crashes and identified as having had motorcycle safety training has increased since 2020 approximately 44 percent.

MOTORCYCLE DRIVERS INVOLVED IN CRASHES WITH SAFETY TRAINING IN BERKS COUNTY BETWEEN 2020 AND 2024								
	2020	2021	2022	2023	2024	Total	# Change	% Change
With Training	43	49	49	58	62	261	19	44.2%
No Training	31	35	25	41	45	177	14	45.2%
Unknown	72	67	90	94	59	382	-13	-18.1%
Total	146	151	164	193	166	820	20	13.7%

Source: PennDOT, PennDOT Crash Data Downloads, 2020-2024

## A Closer Look at Heavy Truck Safety

Berks County experiences a significant amount of truck traffic on its roadway system due to the geographic location and proximity to other major warehousing hubs. Interstate 78 carries a significant amount of truck traffic between regional industrial centers and industrial parks located in Berks County such as Berks Park 78. The data below looks at safety trends for heavy trucks (defined as a truck with gross vehicle weight rating (GVWR) greater than 10,000 pounds). The data also shows where Berks County ranks out of 67 counties in Pennsylvania for frequency of crashes shown in the following chart.

Overall Berks County sees many heavy truck crashes and has been ranked in the top ten for crash frequency across Pennsylvania from 2020-2024.

<b>HEAVY TRUCK RELATED CRASHES BETWEEN 2020 AND 2024</b>				
Year	Berks County	Pennsylvania	% of All PA Crashes	County Ranking
2020	276	6,563	4.2%	6
2021	357	7,499	4.8%	6
2022	392	7,769	5.0%	4
2023	301	6,906	4.4%	5
2024	303	6,991	4.3%	5

Source: PennDOT Pennsylvania Crash Information Tool, 2020-2024

Heavy truck involvement in fatal crashes has fluctuated over the years. The County ranked in the top 10 of all fatal crashes in Pennsylvania for every year since 2021.

<b>HEAVY TRUCK RELATED FATAL CRASHES BETWEEN 2020 AND 2024</b>				
Year	Berks County	Pennsylvania	% of All PA Fatal Crashes	County Ranking
2020	2	115	1.7%	16
2021	9	147	6.1%	2
2022	5	152	3.3%	3
2023	7	143	4.9%	1
2024	6	126	4.8%	3

Source: PennDOT Pennsylvania Crash Information Tool, 2020-2024

The County is also in the top ten for crashes that involve heavy trucks that result in suspected serious injury.

<b>HEAVY TRUCK RELATED SUSPECTED SERIOUS INJURY CRASHES BETWEEN 2020 AND 2024</b>				
Year	Berks County	Pennsylvania	% of All PA SSI Crashes	County Ranking
2020	12	273	4.4%	6
2021	20	321	6.2%	2
2022	12	278	4.3%	4
2023	8	258	3.1%	8
2024	13	274	4.7%	4

Source: PennDOT Pennsylvania Crash Information Tool, 2020-2024

