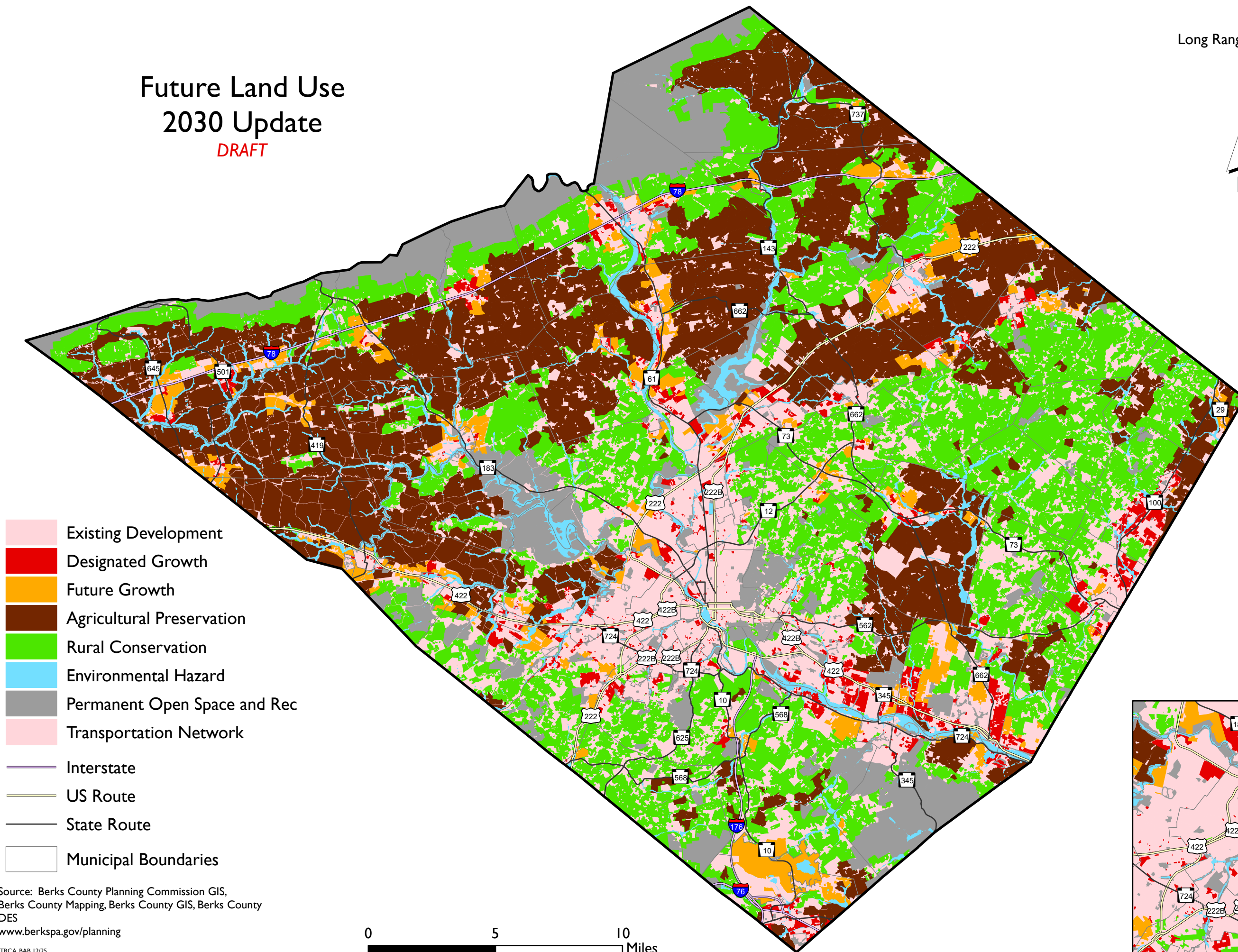
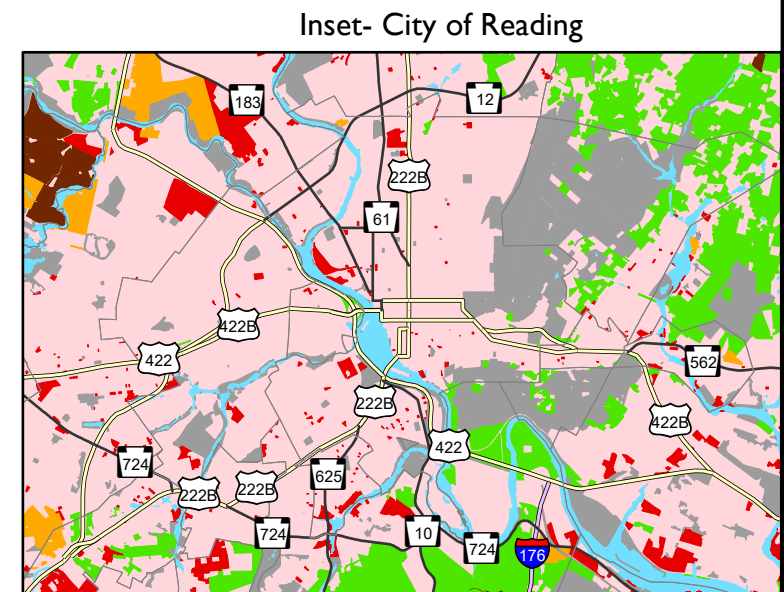




Future Land Use 2030 Update *DRAFT*



- Existing Development
- Designated Growth
- Future Growth
- Agricultural Preservation
- Rural Conservation
- Environmental Hazard
- Permanent Open Space and Rec
- Transportation Network
- Interstate
- US Route
- State Route
- Municipal Boundaries



Source: Berks County Planning Commission GIS,
Berks County Mapping, Berks County GIS, Berks County
DES
www.berkspa.gov/planning

