

RESILIENCY

From a transportation perspective, threats of extreme weather events (such as heat, drought, floods, and severe weather ranging from hurricanes to blizzards) pose substantial environmental, economic, public health and safety risks. An assessment of potential extreme weather impacts on transportation infrastructure could benefit regional planning activities. Often-cited resiliency strategies such as green infrastructure, heat island abatement, alternative fuels and fleets, and alternative transportation may help reduce future risks while creating other near-term community benefits.

The Berks County Department of Emergency Services develops and maintains a Berks County Emergency Operations Plan and a Hazard Vulnerability Assessment and Mitigation Plan that serve to coordinate emergency hazard mitigation activities. The Hazard Vulnerability Assessment and Mitigation Plan documents historic hazard events that occurred in Berks County dating back to 1958. In addition, a summarization of the hazards that present the greatest potential risk are identified. Part of the plan development process includes identifying what initiatives – mitigation actions – the County is taking (i.e., existing) or could take (i.e., potential) to minimize the effects of a hazard event on the Berks County population, economy, property, building stock, and infrastructure.

These include evacuation and transportation security planning that anticipates, absorbs, adapts to, and recovers from disruptions. These plans outline the types, frequencies, vulnerabilities, capabilities, and mitigations for various natural and man-made disasters. The plans establish an incident command system to coordinate emergency and evacuation responsibilities among the various emergency responders. RATS and the BCPC will continue to communicate with both PennDOT and the County Emergency Services Department to ensure that the plans remain current.

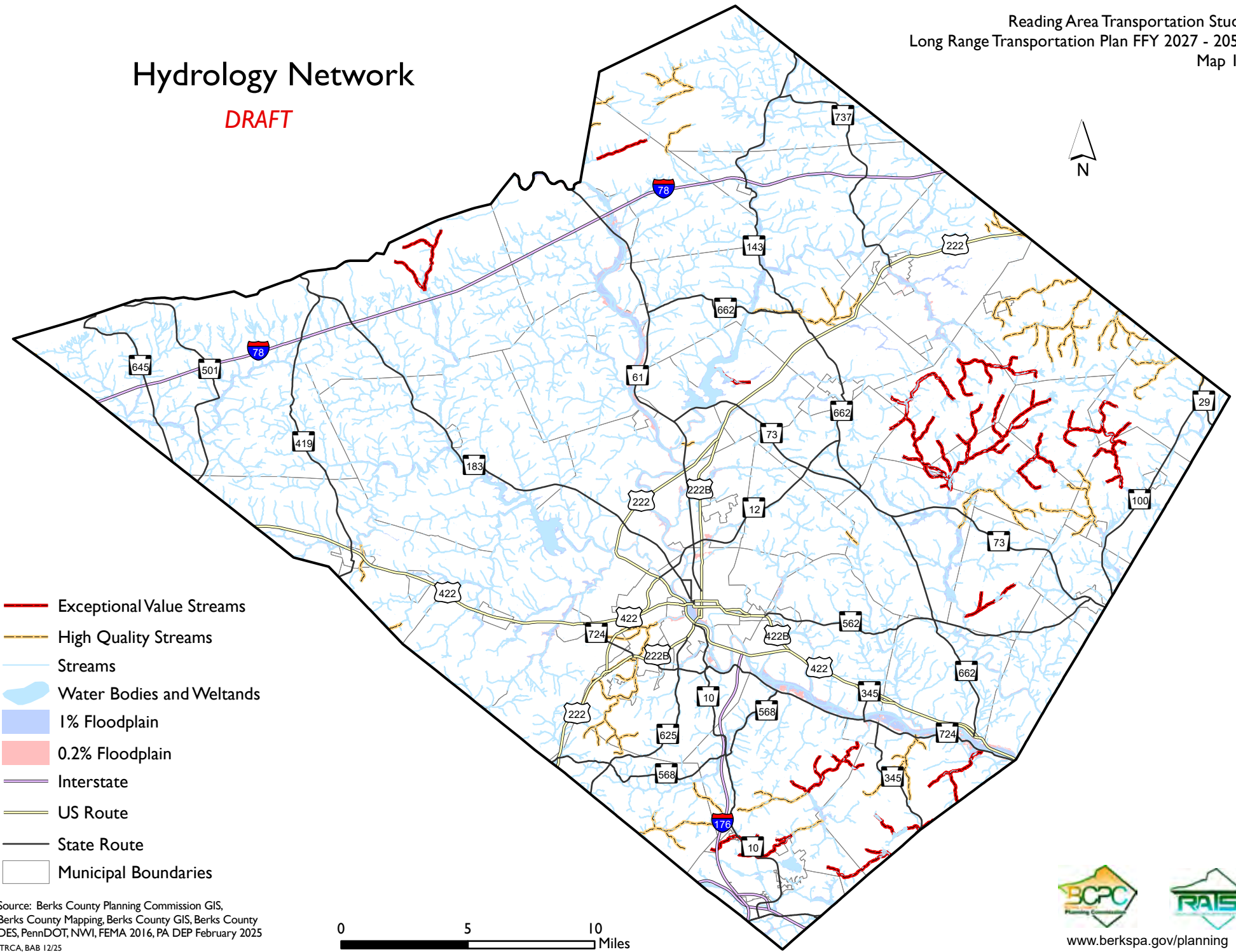
Federal regulations require PennDOT and MPOs to address changing weather conditions as a focus of long-range planning. In 2017, PennDOT completed its Extreme Weather Vulnerability Study (EWVS) which was developed to better anticipate the consequences and potential impacts of extreme weather events and to identify funding priorities and strategies to improve transportation system resiliency. Many of the strategies identified in the EWVS are incorporated into the County's current and ongoing efforts to mitigate changing weather conditions on existing and future infrastructure.

Current planning regulations already include a number of requirements that generally align with weather condition mitigation and adaptation. For example, provisions that relate to efficient management and operation of the transportation system, coordination with land use plans, congestion mitigation, and electric vehicle and alternative fuels use can be related to reducing harmful emissions. Further, RATS, in collaboration with PennDOT, will review historical impacts of events such as flooding, and attempt to mitigate those impacts through improved design and incorporating resiliency into the project prioritization process.



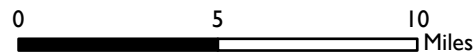
Hydrology Network

DRAFT



- Exceptional Value Streams
- High Quality Streams
- Streams
- Water Bodies and Wetlands
- 1% Floodplain
- 0.2% Floodplain
- Interstate
- US Route
- State Route
- Municipal Boundaries

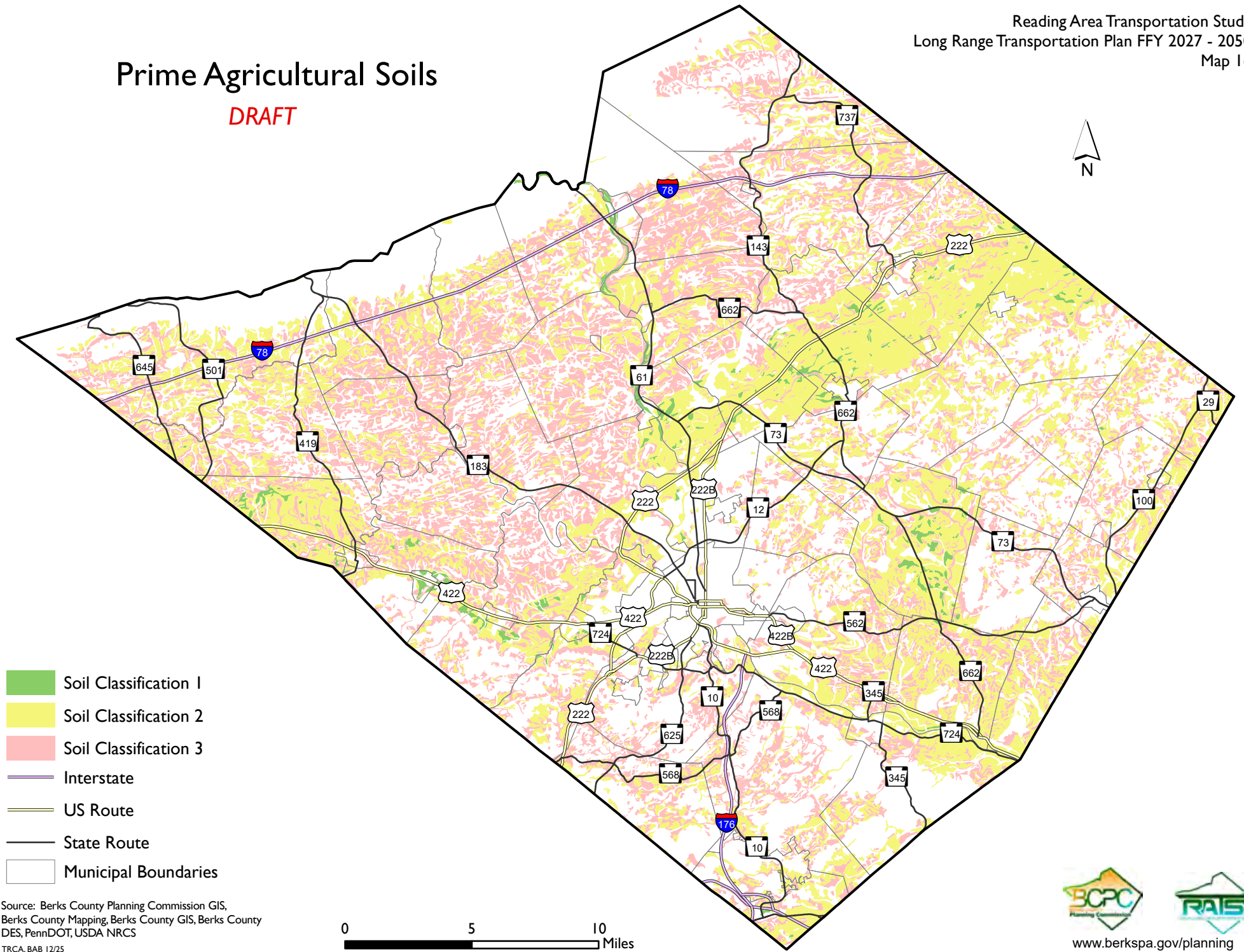
Source: Berks County Planning Commission GIS,
 Berks County Mapping, Berks County GIS, Berks County
 DES, PennDOT, NWI, FEMA 2016, PA DEP February 2025
 TRCA, BAB 12/25



www.berkspa.gov/planning

Prime Agricultural Soils

DRAFT



- Soil Classification 1
- Soil Classification 2
- Soil Classification 3
- Interstate
- US Route
- State Route
- Municipal Boundaries

Source: Berks County Planning Commission GIS,
Berks County Mapping, Berks County GIS, Berks County
DES, PennDOT, USDA NRCS

TRCA, BAB 12/25

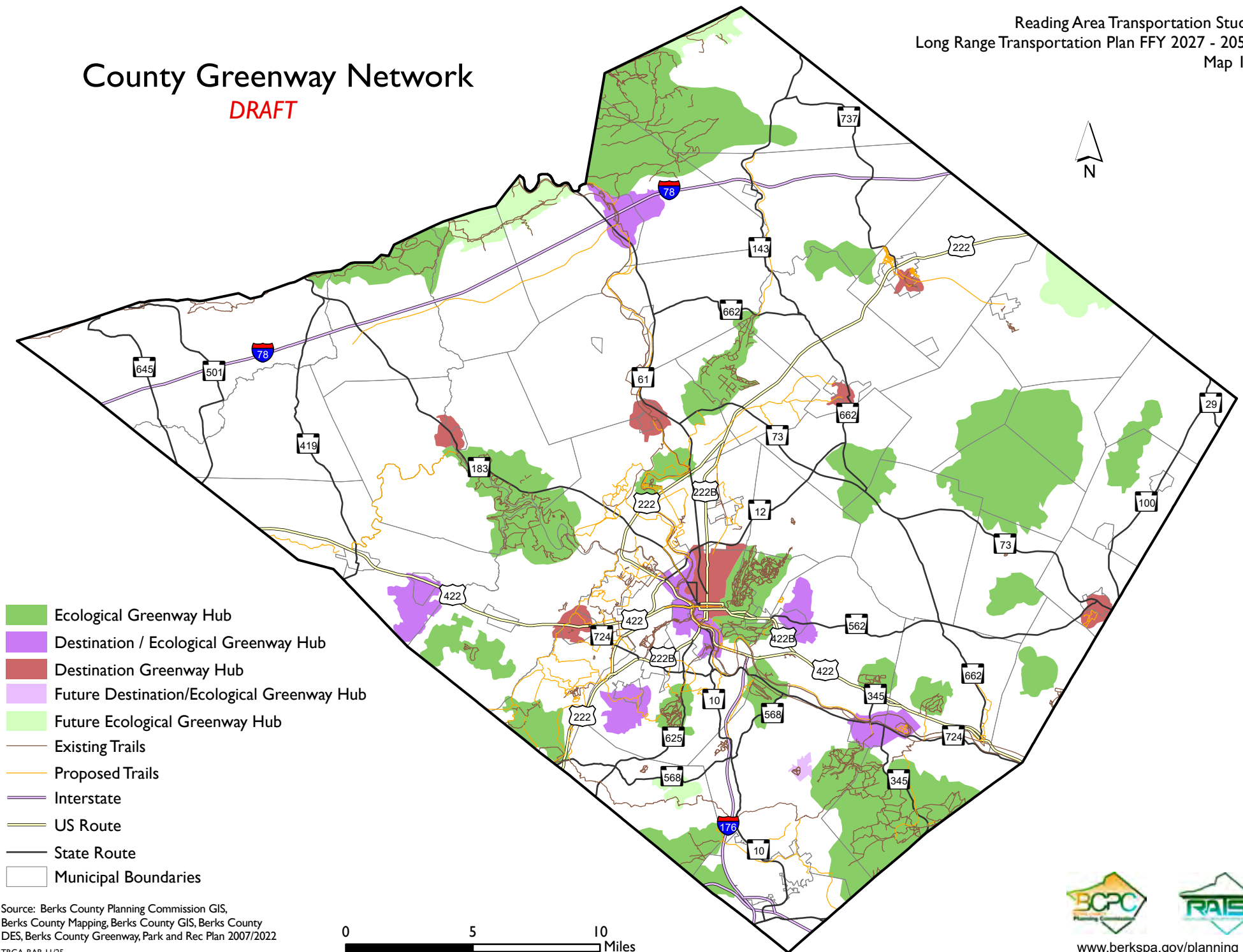
0 5 10 Miles



www.berkspa.gov/planning

County Greenway Network

DRAFT

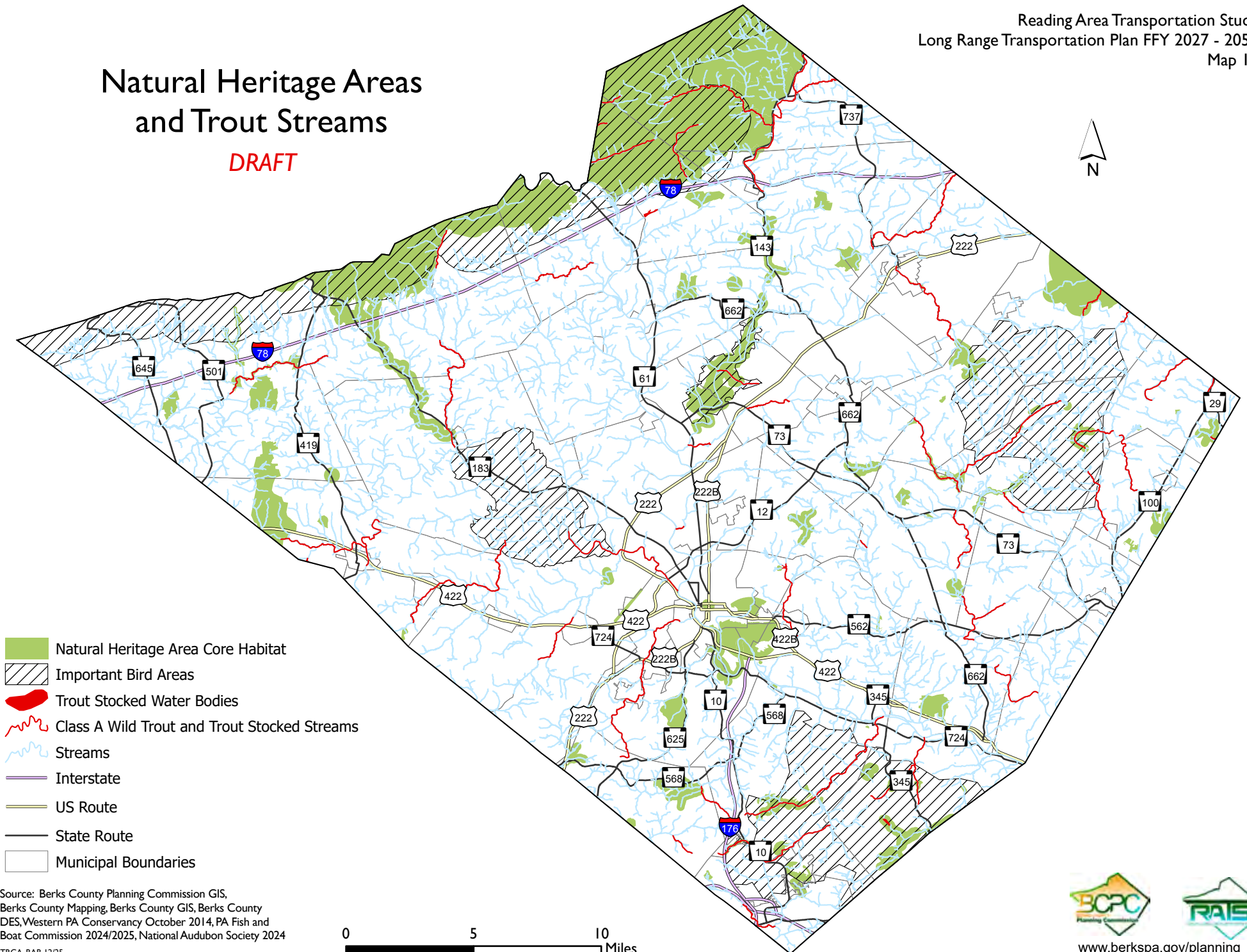


- Ecological Greenway Hub
- Destination / Ecological Greenway Hub
- Destination Greenway Hub
- Future Destination/Ecological Greenway Hub
- Future Ecological Greenway Hub
- Existing Trails
- Proposed Trails
- Interstate
- US Route
- State Route
- Municipal Boundaries

Source: Berks County Planning Commission GIS,
 Berks County Mapping, Berks County GIS, Berks County
 DES, Berks County Greenway, Park and Rec Plan 2007/2022
 TRCA, BAB 11/25

Natural Heritage Areas and Trout Streams

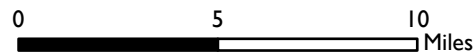
DRAFT



- Natural Heritage Area Core Habitat
- Important Bird Areas
- Trout Stocked Water Bodies
- Class A Wild Trout and Trout Stocked Streams
- Streams
- Interstate
- US Route
- State Route
- Municipal Boundaries

Source: Berks County Planning Commission GIS,
 Berks County Mapping, Berks County GIS, Berks County
 DES, Western PA Conservancy October 2014, PA Fish and
 Boat Commission 2024/2025, National Audubon Society 2024

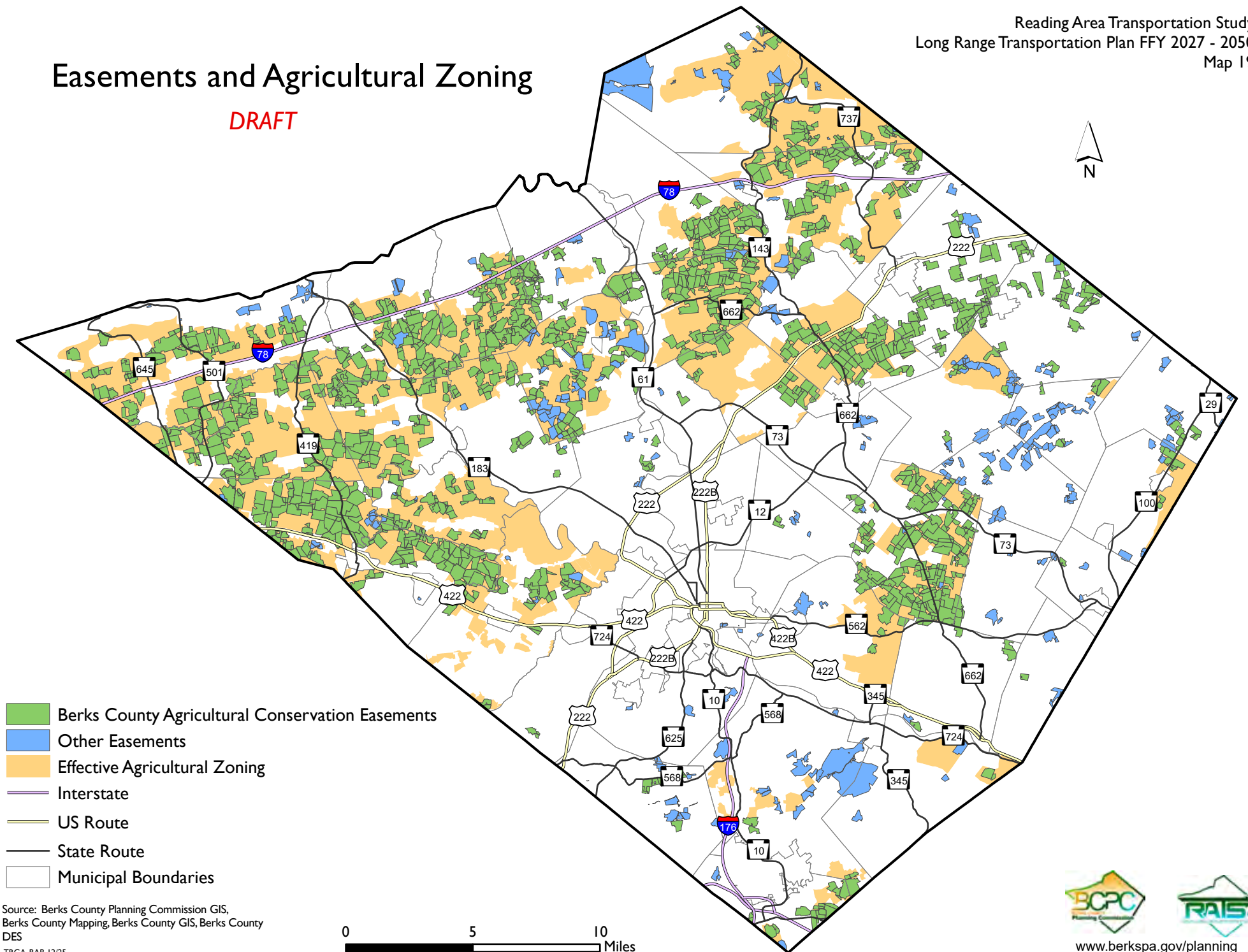
TRCA, BAB 12/25



www.berkspa.gov/planning

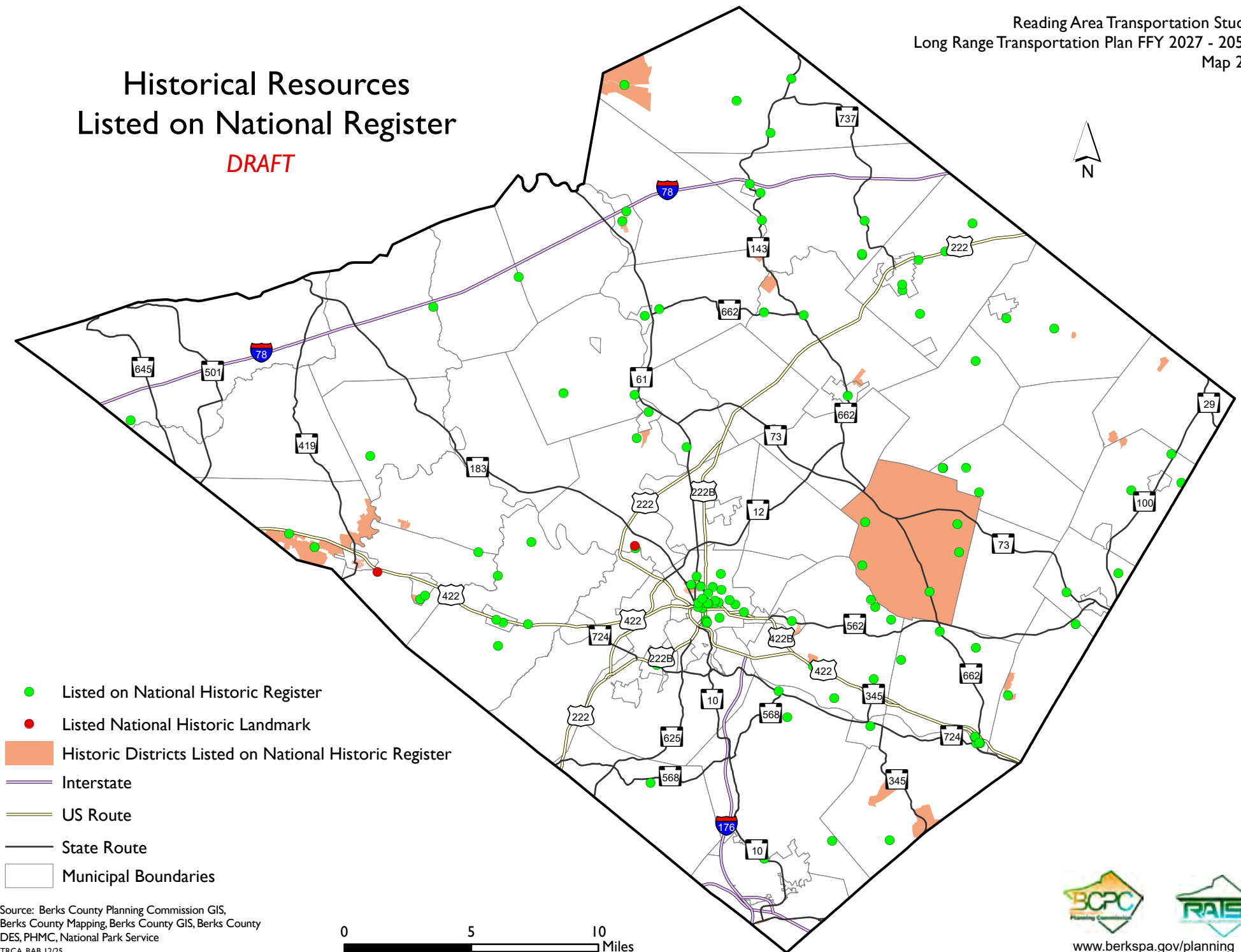
Easements and Agricultural Zoning

DRAFT



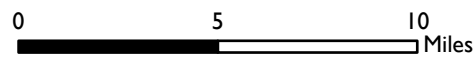
Historical Resources Listed on National Register

DRAFT



- Listed on National Historic Register
- Listed National Historic Landmark
- Historic Districts Listed on National Historic Register
- Interstate
- US Route
- State Route
- Municipal Boundaries

Source: Berks County Planning Commission GIS,
Berks County Mapping, Berks County GIS, Berks County
DES, PHMC, National Park Service
TRCA, BAB 12/25



www.berkspa.gov/planning