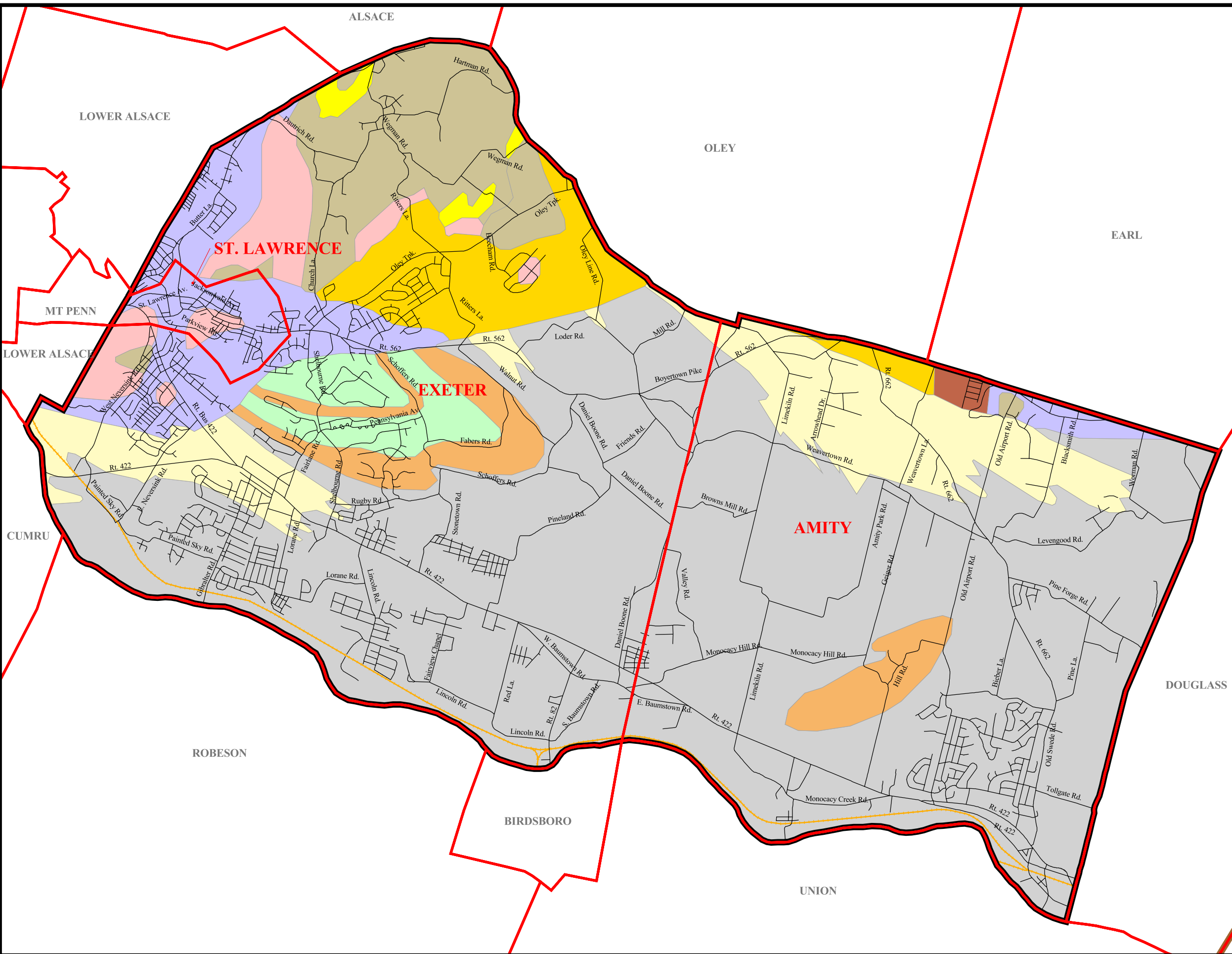


**Geology and Aquifer Yield by Formation in Gallons per Minute, The Joint Comprehensive Plan For St. Lawrence, Exeter and Amity, Berks County**



**Geology and Aquifer Yield by Formation (gpm)**

- ⚡ Railroads
- Allentown Fm (100 gpm)
- Beekmantown Group (50 gpm)
- Brunswick Fm (60 gpm)
- Diabase (5 gpm)
- Granitic Gneiss (20 gpm)
- Hardyston Fm (20 gpm)
- Hornblende Gneiss (10 gpm)
- Leithsville Fm (100 gpm)
- Limestone Fanogglomerate (200 gpm)
- Martinsburg Fm (32 gpm)
- New Oxford Fm (66 gpm)



Data source: Berks County GIS and SSM

**Spotts, Stevens and McCoy, Inc.**  
 1047 N. Park Rd.  
 Reading, PA 19610-0307  
 Tel: 610-621-2000 Fax: 610-376-6950

11/14/01	g:\projects\w6000\w6128\w6128004\projects\w6128_004.apr
----------	---