

AG QUARTERLY

January 2025



BERKS COUNTY DEPARTMENT OF AGRICULTURE

Kimberly Fies | Amanda Burkard-Sell | Mary Shah
Clyde Myers | Ashley Rice | Sam Bond | Rachel Painter



WHAT WE DO

The Berks County Department of Agriculture promotes agriculture in Berks County by preserving farmland, invigorating agricultural economic development, and connecting our community to agricultural resources.

WHO WE ARE

We are a department of the County of Berks, established in 2015 to serve Berks County residents. We are a team of seven staff who are dedicated to ensuring a thriving agricultural industry in Berks County.

Credits

Content and editing by Berks County Dept. of Agriculture staff; template design by Rick Royer, Berks County Planning.
Cover photo credit: Blair Seitz

CONTENT

1

Preservation Spotlight.....	2
Griesemer Beekeeping - Griesemer Family	
Ag Land Preservation Stats.....	3
Q4 Highlights.....	4
Our Work in Numbers.....	6
2025 Objectives.....	7
Upcoming.....	8
Ag Newsflash.....	9
Growing Berks Study Nearing Completion	
Berks County Ag Fact.....	10



Photo credit:
Renningers Kutztown Farmers and Antiques Market

PRESERVATION SPOTLIGHT

Griesemer Beekeeping - Griesemer Family Settlement #579

Excerpts from "A Dream Come True" by Clyde A. B. Myers, originally published in the Reading Eagle.



- James and Christine Griesemer are proud owners of their 22-acre preserved farm in North Heidelberg Township.
- James operates Griesemer Beekeeping on the farm, raising honeybees, producing honey, promoting pollinators and developing open pollinated vegetable seeds. They have plans to expand with a high tunnel for specialty herbs and an acre of berries.
- Although the family has a history of farming, it has skipped a few generations, so they are first generation farmers.
- The Griesemers' young son, Charles, loves to help with the farm activities every chance he gets.

"Although we did not benefit financially from the farm preservation program, we know we will benefit for years to come since our farm and the surrounding farms will never be threatened by development."

Please see our website for full articles on preserved farms.

AG LAND PRESERVATION STATS

3

2024 Report



831
Farms
Preserved

79,314
Acres
Preserved

2024 Totals:

Farms preserved: 9

Acres preserved: 769

Program Total:

County invested: **\$85M**

State invested: **\$94M**

Landowner Donated Value: **\$41M**

The Berks County Department of Agriculture oversees the administration of the Agricultural Conservation Easement (ACE) Program, which permanently preserves Berks County's farmland. Berks County is a leader in both the state and the nation for preserved farms and will be celebrating 80,000 acres of preserved farmland later this year.

Q4 HIGHLIGHTS

Tractor & Farm Truck Tire Collection

The Department partnered with Allegheny Towing & Salvage to hold a massive tire collection this year. In a combination with dry weather conditions, the public's willingness to participate made 2024's tire collection was the most successful by far. We were able to save **52 tons** from going to the landfill, polluting the land, or becoming home to mosquitos.



TRACTOR & FARM TRUCK TIRE COLLECTION

Ag Apprenticeship Recognition

We joined the PA Department of Agriculture and the Center for Dairy Excellence as they celebrated National Apprenticeship Week at the Zahncroft Dairy. The event highlighted the CDE's Dairy Herds Manager Apprenticeship and Pre-Apprenticeship program and recognized the importance of the industry and its labor needs.



13th Annual Career & Job Fair

The Department hosted its largest Ag & Natural Resources Career & Job Fair at the Leesport Farmer's Market. Exhibitors/employers had the opportunity to interact with over 300 participants. 16 high schools were represented. The fair showcased 40 employers highlighting the diverse employment opportunities in ag and ag-adjacent fields. We received very positive reviews from both participants and exhibitors and look forward to next year's event!



AGRICULTURE & NATURAL RESOURCES

CAREER & JOB FAIR

NOVEMBER 14, 2024 8:30-11:30 AM
Leesport Farmers Market, Leesport, PA

FREE and open to high schoolers, college students, and adults of all education levels!

- Exhibitors include: local companies, government agencies, and colleges.
- Opportunities for internships, volunteering, job shadowing.
- Current or future employment opportunities.

Ag is more than farming!

It includes

Save THE Date

Register Here



business engineering

animal production

marketing

crop production

robotics

finance

education

Questions? Contact : DeptofAg@berkspa.gov or 610-378-1844

Q4 HIGHLIGHTS

5

Lucky Penny the Pig's Adventures with the Department of Agriculture!



Lucky Penny the Pig graciously visited the Department of Agriculture, letting the good folks at the Greater Reading Chamber Alliance (GRCA) know that she'd be in good hands. She hung out with Rachel from the department, and wanted to remind people to drive safe around farms! She also visited the Penn State Extension, and hung out with the Cow on the second floor. Penny even got to visit with some long lost cousins she hasn't seen in years!



Penny also visited the Career Fair held in November and met many excited fans who took selfies! She hung out with officers from Pennsylvania Fish and Boat Commission, where she learned all about fishing and boating regulations! She also had a good time with the ladies from the Philadelphia District U.S. Army Corps of Engineers, and they even gave her a sticker!

OUR WORK IN NUMBERS



2024 Q4 Online Presence

Our staff continue to promote agriculture and share resources with thousands of Berks County residents via Facebook, the online Local Food Map, and the Berks Ag Event Calendar.

5,800 GrowTogether
Website Users

12,869 Food Map &
Events Calendar
Views

255 Local Farms &
Vendors Listed
on Food Map

137 Ag Events
Listed

54,793 Facebook
Page Views

87 Facebook
Posts



2024 Fourth Quarter Events

300+ People attended the
Career Fair

40 Exhibitors attended the
Career Fair

200+ Promotional items given
away at the Career Fair

30 Farmers participated in
the Tire Collection

52 Tons of tires collected

2024 OBJECTIVES

7

Fourth Quarter Update

Our team has continued to make key advances on our annual objectives in 2024.

Continue strengthening the agricultural land preservation program.

- Document and address identified conflicts with terms of the deed of easement and work towards resolution.
- Landscape software:
 - Continued to populate and confirm data in the platform.

Refining Department of Agriculture's strategy, function, and branding.

- Growing Berks - Ag Study:
 - Refined the Road Map and finalized format and graphics.
 - Presented to Advisory Committee

Continue to promote the diverse ag career opportunities.

- Presented information on the Department and Ag careers to Reading High Students participating in the BBEC - Students interacting with Business program.
- Staff attended and networked at the BBEC Business and Education Summit.

STRATEGIC FUNCTION of the Berks County Department of Agriculture



Want to know more?

Don't hesitate to reach out -
we'd love to hear from you.

UPCOMING...



Ag Literacy Week | March 17-21, 2025

Audience: Elementary School students

Description: Volunteers will read a agriculture themed book to students of Berks County Elementary classrooms, followed by an activity. This year's book is The Soil In Jackie's Garden.

Partners: Berks County Schools, B.A.R.N.

Contact us if you would interested in reading to a classroom!

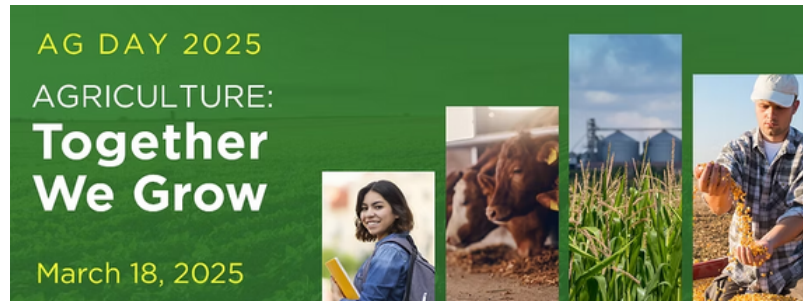
National Ag Day | March 18, 2025

Audience: Berks County citizens

Description: A presentation and tour focusing on the history of agriculture in Berks County in conjunction with America250PA Berks.

Partners: Local historical societies

Look for more information to follow!



80,000 Acres Preserved Celebration | June 18, 2025

Audience: Preserved farm owners, public officials, and those associated with the local ag industry.

Description: Ceremonial Banquet followed by a Reading Fightin' Phils game in conjunction with Berks County Farm Bureau Farmers Night at the Stadium.

Partners: GRCA, Local agribusinesses, PA Dept. of Agriculture, PA Farm Bureau

Would you like to partner with us for future events? Give us a call or email us: 610-378-1844 or DeptofAg@BerksPA.gov

GROWING BERKS

Berks County Ag Study Nearing Completion

The fact-finding portion of county's ag study, *Growing Berks: Agriculture's Economic Impact and a Roadmap for Its Future*, is now complete. The study compiled available data, incorporated comments from personal interviews and focus groups and used the information to quantify the contribution of agriculture to the county and regional economy and identify key areas of strengths and weaknesses.

The study's *Roadmap for the Future* outlines action items for the county and its partners to take to support the ag industry. The Ag Advisory Committee met to help shape these recommendations, which will serve as a guide the department for the future.

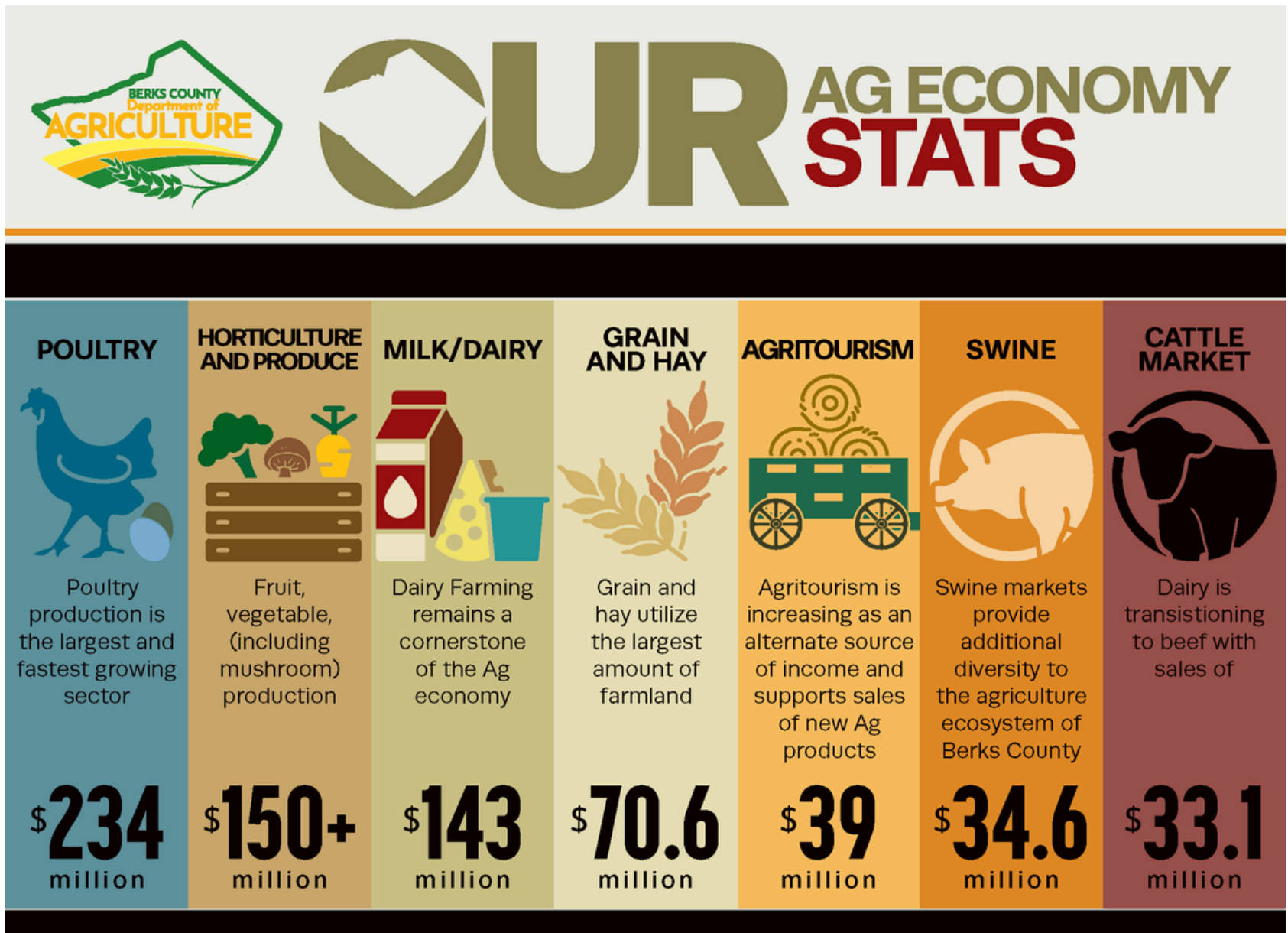
Growing Berks is a component of Imagine Berks and will be used to support and enhance the economic contribution of the agricultural industry in Berks County.

The study will to be presented to the County Commissioners at an operations meeting in January.



Report
Coming
Soon

BERKS COUNTY AG FACTS



GROWING BERKS FOCUS AREAS

- Land Use and Land Security
- Workforce and Career Pathways
- Entrepreneurship and Agri-Business Development
- Technology and the Farm
- Market Development
- Agriculture Finance

OUR GOALS

1
PROMOTE
agriculture and the agriculture industry as a vital piece of the Berks County economy.

2
EXPAND
local knowledge of agriculture practices and the importance of preservation.

3
INCREASE
business management education for farm transitions.

4
FOSTER
agribusiness entrepreneurship.

5
ENCOURAGE
adoption of innovation and technology.

6
ENHANCE
marketing outreach to support expanding market opportunities and value-added products.

7
SUPPORT
agriculture and the financing options for infrastructure, market growth, and physical expansion and improvements.

8
LEVERAGE
public-private partnerships to expand access to resources, expertise, and capabilities.



CONTACT US OR STOP BY!

610-378-1844 | DeptofAg@BerksPA.gov
1238 County Welfare Rd., Leesport, PA 19533
Office hours: 8:00 am - 5:00 pm
www.berkspa.gov/departments/agriculture